

# 30054 Orchard Lake Rd

Farmington Hills, MI 48334



For more information contact:  
Howard Schwartz | [howard@hscre.com](mailto:howard@hscre.com) | C: 248.310.2025

Howard Schwartz Commercial Real Estate, LLC  
30054 Orchard Lake Rd  
Farmington Hills, MI 48334  
P: 248.538.4800 F: 248.538.8530

# Property Details



**Price:** See Listing Broker (furnishings to be included in the sale)

**SF:** 1,844

**Acres:** 0.24

**Parking:** 12 spaces

**Year Built:** 1960

**Renovated:** 2004

**Zoning:** BI / Office

**Main Floor:** Main Office, Reception Area, 2 Restrooms, Full Kitchen, Conference Room, & Back Office

**Basement:** Full basement; used for storage; partially finished

**Maintenance:** Interior Painted July 2022

For more information contact:  
Howard Schwartz | [howard@hscre.com](mailto:howard@hscre.com) | C: 248.310.2025

Howard Schwartz Commercial Real Estate, LLC  
30054 Orchard Lake Rd  
Farmington Hills, MI 48334  
P: 248.538.4800 F: 248.538.8530

# Interior Photos – Reception Area



For more information contact:  
Howard Schwartz | [howard@hscree.com](mailto:howard@hscree.com) | C: 248.310.2025

Howard Schwartz Commercial Real Estate, LLC  
30054 Orchard Lake Rd  
Farmington Hills, MI 48334  
P: 248.538.4800 F: 248.538.8530

# Interior Photos – Main Office



For more information contact:  
Howard Schwartz | [howard@hscre.com](mailto:howard@hscre.com) | C: 248.310.2025

Howard Schwartz Commercial Real Estate, LLC  
30054 Orchard Lake Rd  
Farmington Hills, MI 48334  
P: 248.538.4800 F: 248.538.8530

# Interior Photos - Kitchen



For more information contact:  
Howard Schwartz | [howard@hscre.com](mailto:howard@hscre.com) | C: 248.310.2025

Howard Schwartz Commercial Real Estate, LLC  
30054 Orchard Lake Rd  
Farmington Hills, MI 48334  
P: 248.538.4800 F: 248.538.8530

# Interior Photos – Conference Room & Back Office

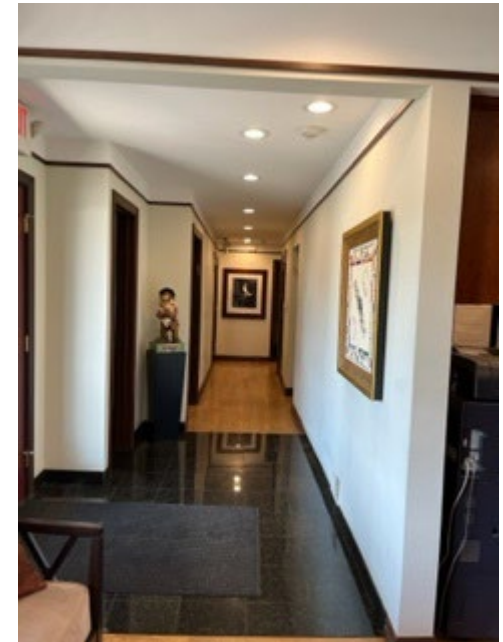


Back Office

Conference Room



Main Hall to  
the Restrooms,  
Kitchen,  
Conference  
Room, & Back  
Office



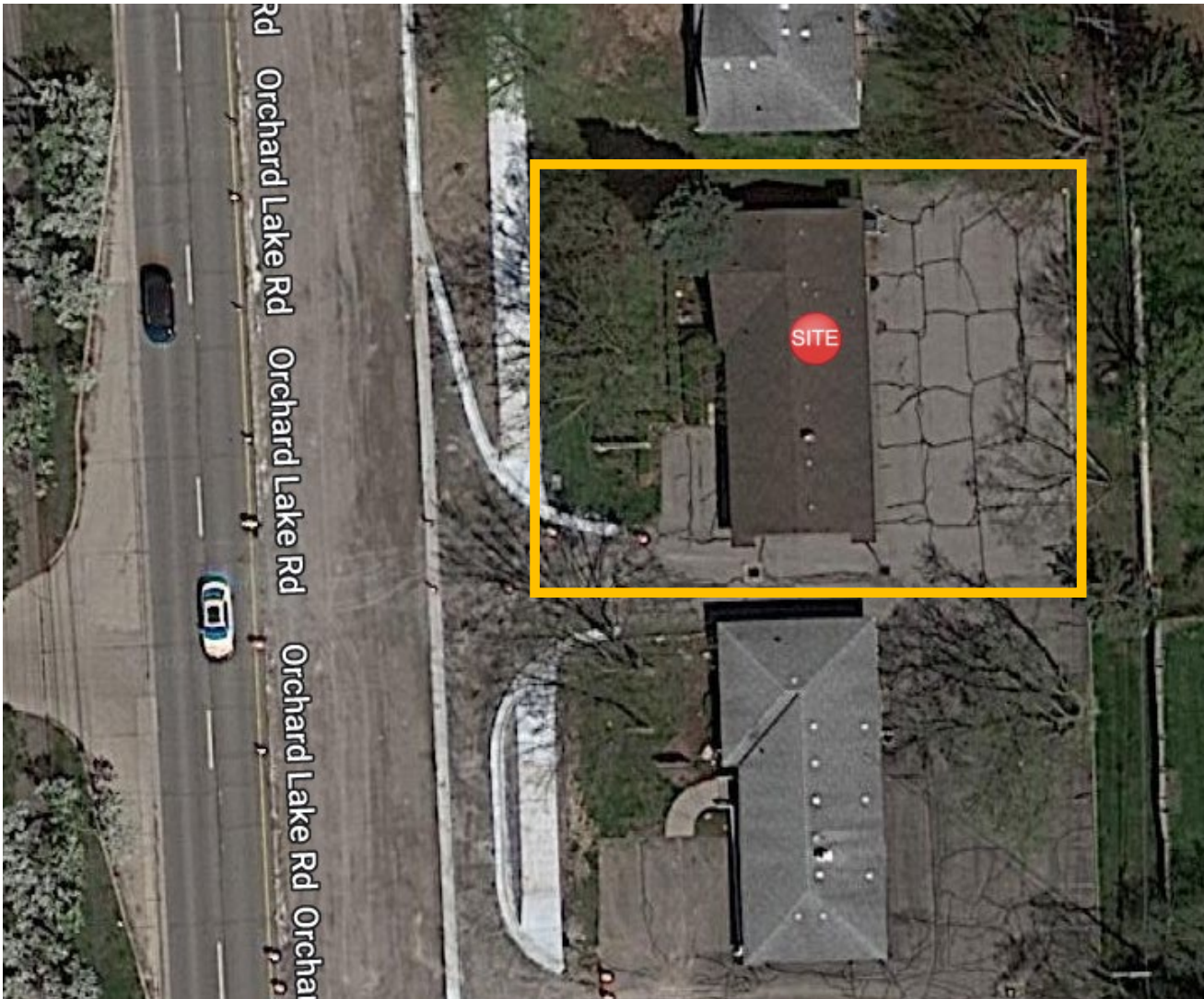
# Interior Photos – Restrooms & Back Entrance



For more information contact:  
Howard Schwartz | [howard@hscre.com](mailto:howard@hscre.com) | C: 248.310.2025

Howard Schwartz Commercial Real Estate, LLC  
30054 Orchard Lake Rd  
Farmington Hills, MI 48334  
P: 248.538.4800 F: 248.538.8530

# Micro Aerial

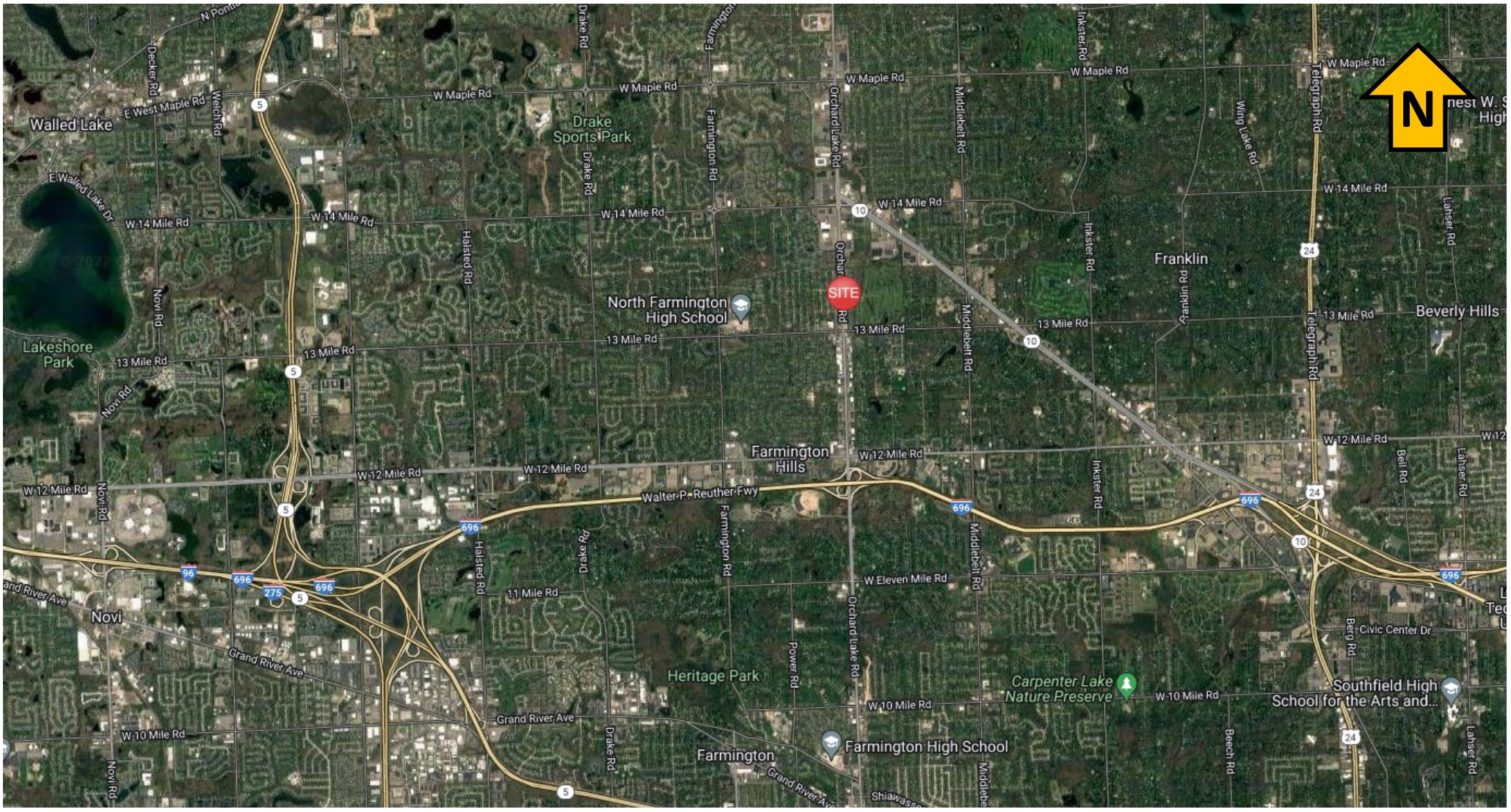


For more information contact:  
Howard Schwartz | [howard@hscre.com](mailto:howard@hscre.com) | C: 248.310.2025

Howard Schwartz Commercial Real Estate, LLC  
30054 Orchard Lake Rd  
Farmington Hills, MI 48334  
P: 248.538.4800 F: 248.538.8530



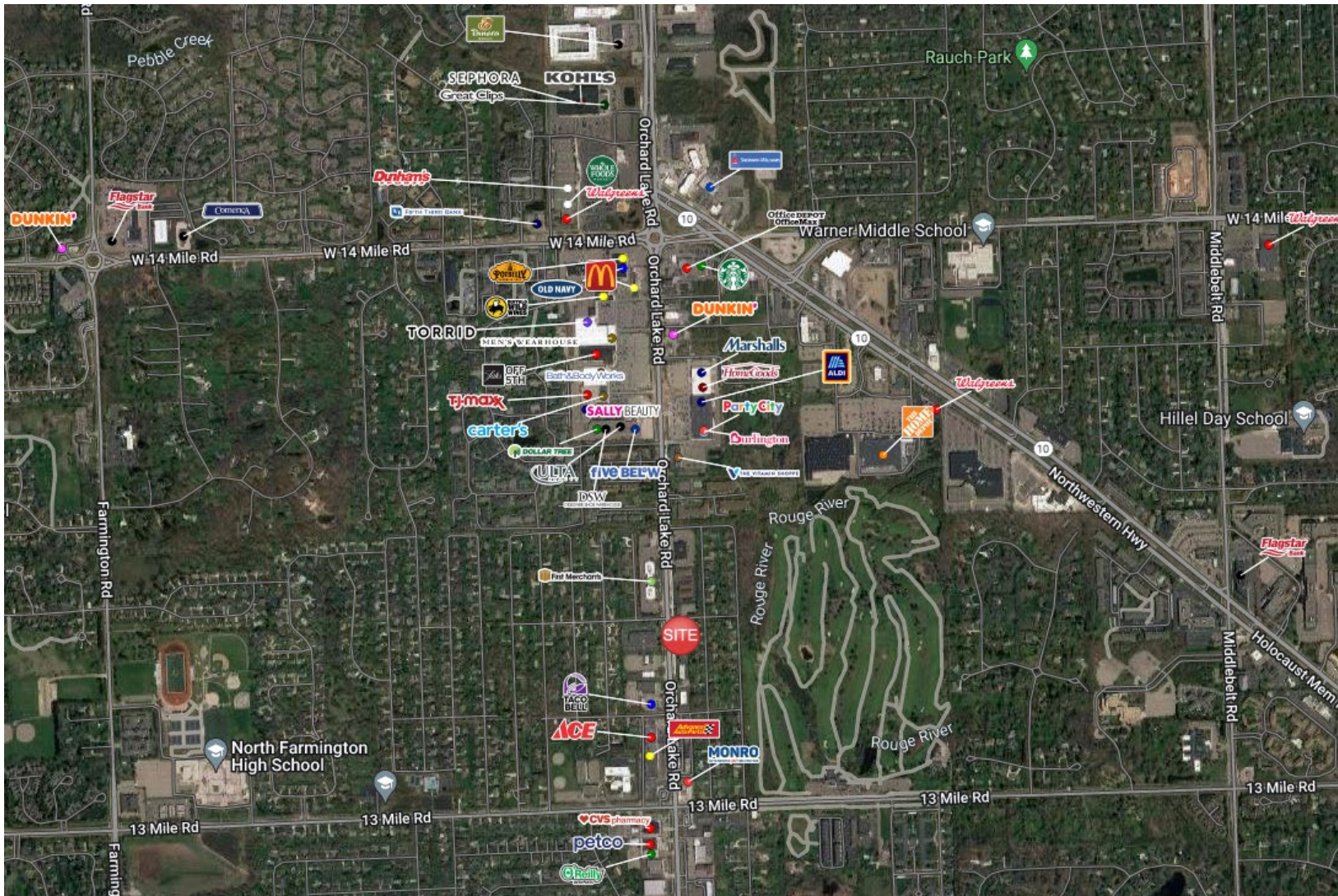
# Macro Aerial



For more information contact:  
Howard Schwartz | [howard@hscre.com](mailto:howard@hscre.com) | C: 248.310.2025

Howard Schwartz Commercial Real Estate, LLC  
30054 Orchard Lake Rd  
Farmington Hills, MI 48334  
P: 248.538.4800 F: 248.538.8530

# Trade Area



For more information contact:  
Howard Schwartz | [howard@hscre.com](mailto:howard@hscre.com) | C: 248.310.2025

Howard Schwartz Commercial Real Estate, LLC  
30054 Orchard Lake Rd  
Farmington Hills, MI 48334  
P: 248.538.4800 F: 248.538.8530

# Demographics

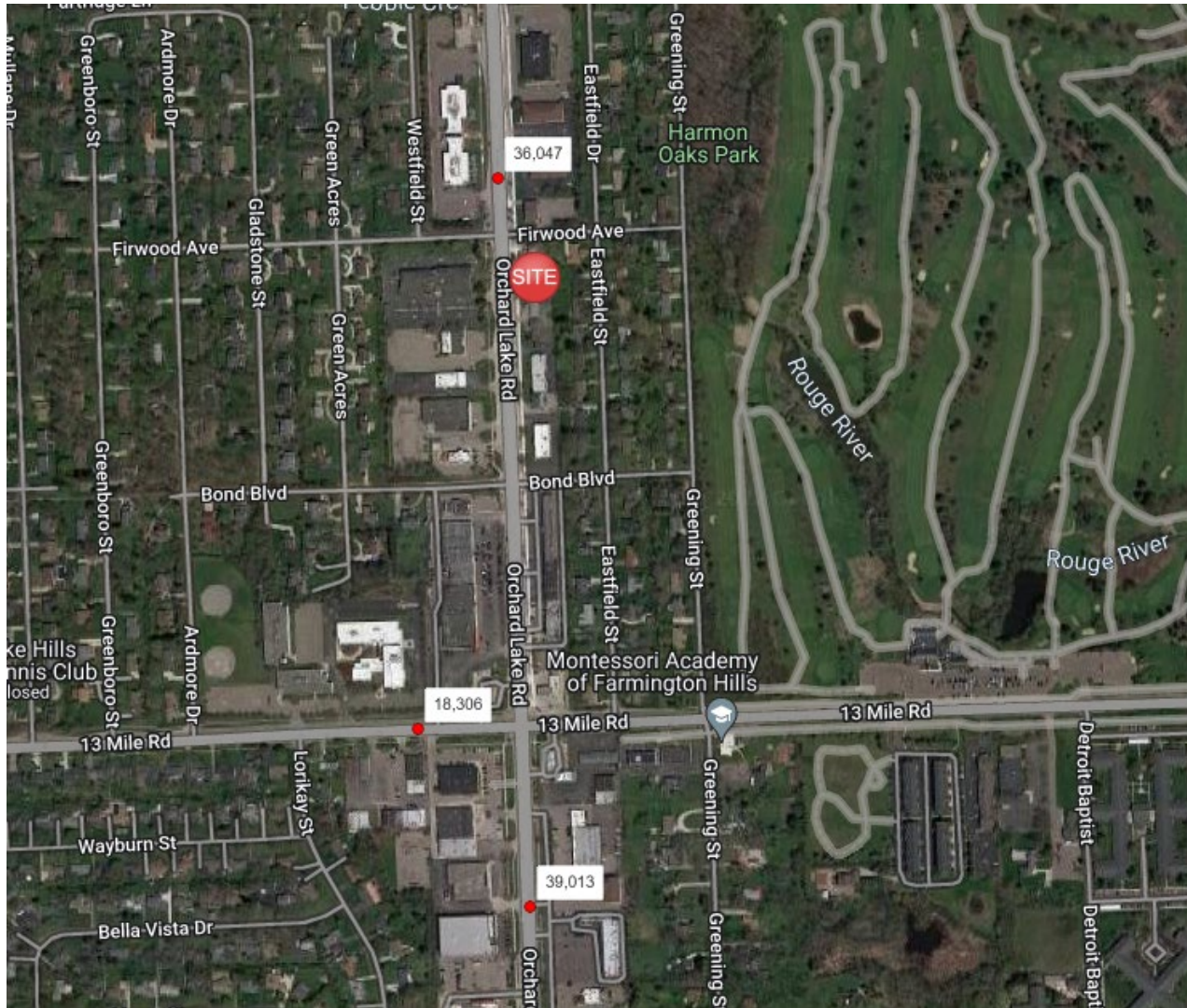


Radius	1 Mile	3 Mile	5 Mile
Population 2022	8,164	63,436	172,820
Households 2022	3,538	25,075	73,505
Avg Household Income 2022	\$105,242	\$137,476	\$126,406
Median Age 2022	49.6	45.9	45.2

For more information contact:  
Howard Schwartz | [howard@hscre.com](mailto:howard@hscre.com) | C: 248.310.2025

Howard Schwartz Commercial Real Estate, LLC  
30054 Orchard Lake Rd  
Farmington Hills, MI 48334  
P: 248.538.4800 F: 248.538.8530

# Traffic Counts



**Submarket**  
Farmington  
Farmington Hills  
Bloomfield

**Distance to Airports**  
Detroit City Airport  
23.3 mi / 32 min  
  
Metro Detroit Airport  
30.4 mi / 30 min

For more information contact:  
Howard Schwartz | [howard@hscre.com](mailto:howard@hscre.com) | C: 248.310.2025

Howard Schwartz Commercial Real Estate, LLC  
30054 Orchard Lake Rd  
Farmington Hills, MI 48334  
P: 248.538.4800 F: 248.538.8530